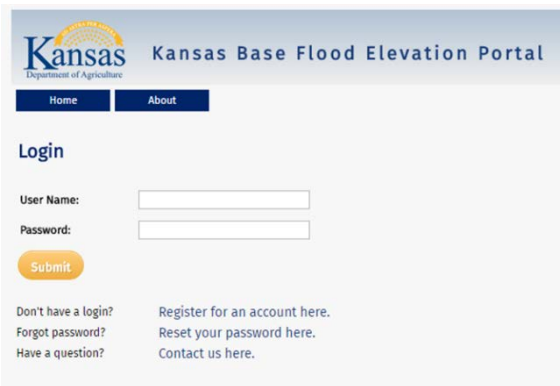


The Base Flood Elevation (BFE) Portal is a collaborative effort between the Kansas Geological Survey's Data Access and Support Center and the Kansas Department of Agriculture's Division of Water Resources. All **Zone A** BFE requests will be routed through this site as of October 1, 2017. This Portal also provides approximate ground elevations obtained from Kansas LiDAR data to be used as a reference only.

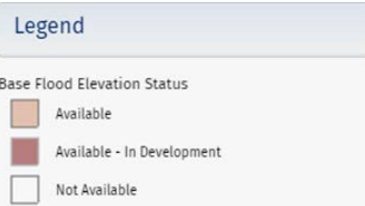
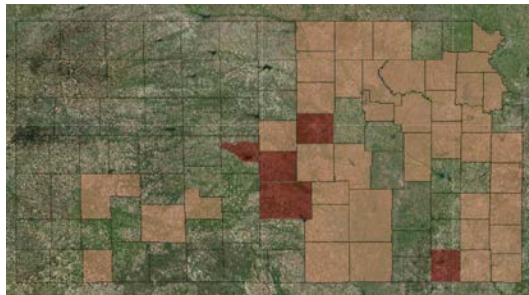
To get started with the BFE Portal, visit: http://maps.kgs.ku.edu/fpm_bfe/about.cfm and register for an account.



Once registered, you will receive an email with your user name, and DWR will approve your account. After approval, you will receive an email with your password, enabling you to logon.

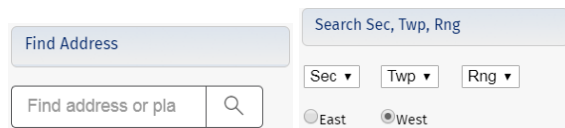
Map

To officially request a BFE, visit the map page.

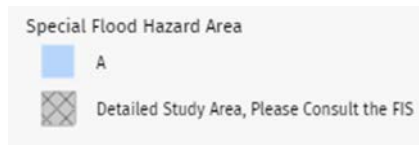


This page will show you where data is currently available. Feel free to contact DWR about data availability outside of these areas.

Use the address search or PLSS search to zoom to your areas of interest.



Notice the legend on the floodplain layer. It will show you Zone A's and it will also show you detailed study areas, where you would need to consult the FIS for a BFE.



Use the layers Tab to turn on and off relevant layers. Address points are available to help you identify the correct property. Other layers include FIRM Panels, streams, and a LiDAR Hillshade.

Layers

Once you have identified your property, try clicking on the map around the property. You should see LiDAR values appear in the top left corner.

LiDAR Value: 1284.1

Keep in mind LiDAR values are **not** survey accurate and are reference only.

Questions? Feel Free to Contact Us.

Tara Lanzrath, CFM – Floodplain Mapping Specialist – KDA-DWR
Tara.Lanzrath@ks.gov (785) 296-2513

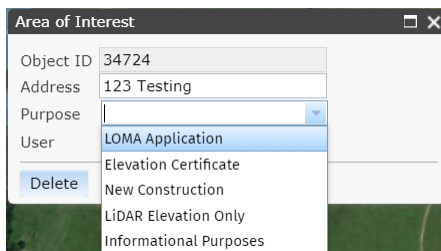
When you are ready to draw your area for the BFE, click on the **Area of Interest Polygon** to draw your property.



Please trace the boundary of the structure using the aerial imagery as your guide as shown below. Try to follow the boundary precisely, as this is what the tool will use to calculate your BFE as well as the approximate Lowest Adjacent Grade (LAG) from the LiDAR.



Next, **fill out the box** that pops up. You will have to provide the address or legal description as well as the purpose (i.e. LOMA Application, Elevation certificate, etc.) in order to request the BFE. There is also the option to specify LiDAR Elevation Only for just an approximate LAG. When you are done, click **Save**.



Once you hit Save, you should receive the message below, and then DWR will be sent an email notifying us of your request.

Thank you. DWR will be in touch.

If your request is approved you will be emailed a letter indicating your BFE and approximate LAG (see sample below). If your request is denied, we will be in touch with you regarding why we were unable to approve your request. It could be as simple as adjusting the polygon, or we may not have data for that location.

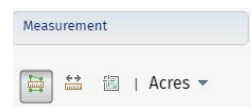


You can navigate to your **Request History** page to verify that your request was submitted and to check the status of the request. The approximate LAG will appear here, and the BFE value will also appear here once approved. You can use the link in the Map Obj field to take you to your request on the map if desired.

User request history

Status	Map Obj	Address	BFE Max	LiDAR Min
Pending	33413	123 testing	0.00	1378.66

Other tools: There is also a measure tool available in the map. **Note:** When you are done using the measure tool, it is best to click the tool "off" by re-clicking on it to unselect.



Questions? Feel Free to Contact Us.
 Tara Lanzrath, CFM – Floodplain Mapping Specialist – KDA-DWR
Tara.Lanzrath@ks.gov (785) 296-2513