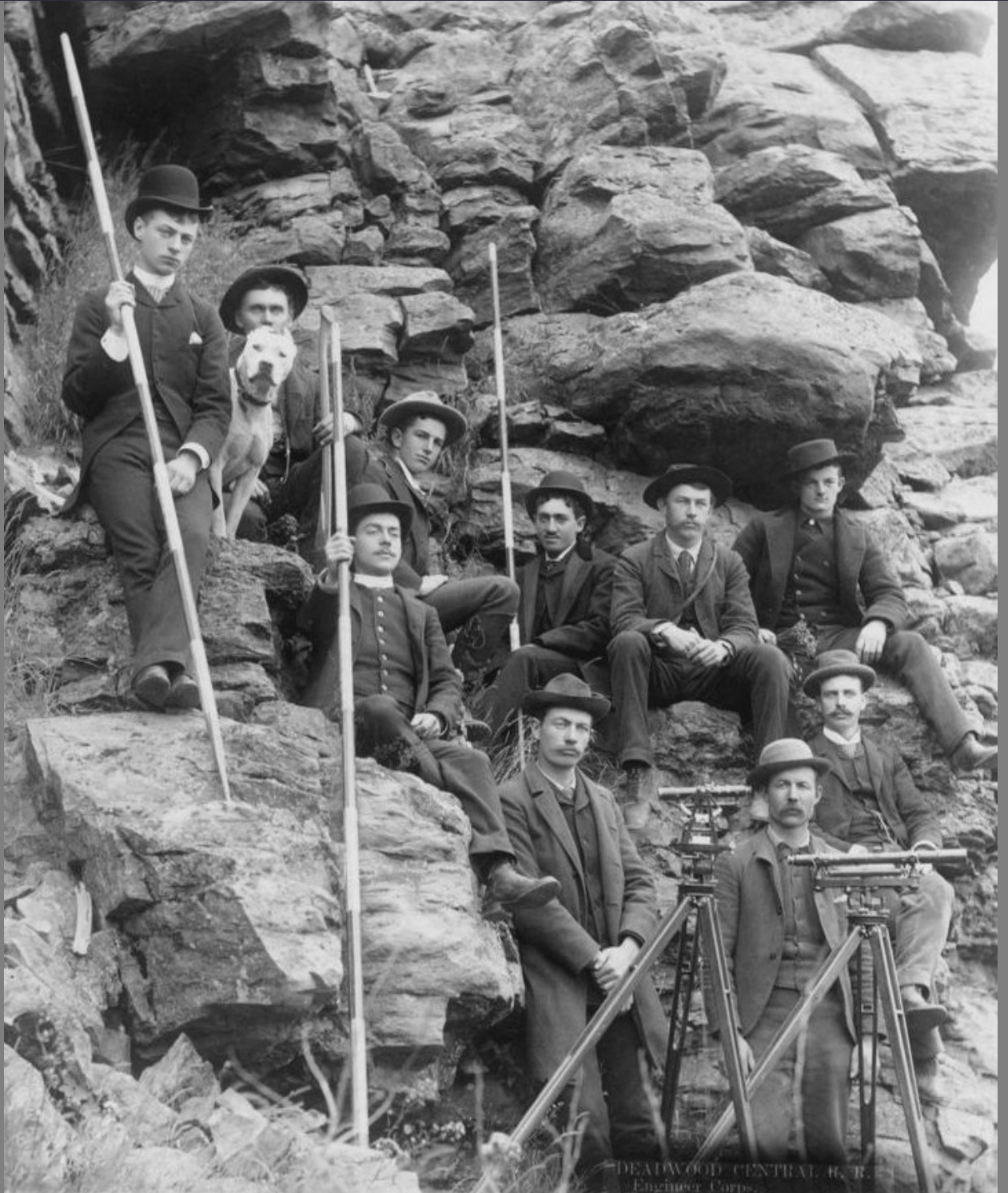


Salina Seminar Series

January 9-11, 2014

Webster Conference Center
2601 North Ohio
Salina, KS 67401



Sponsored by:

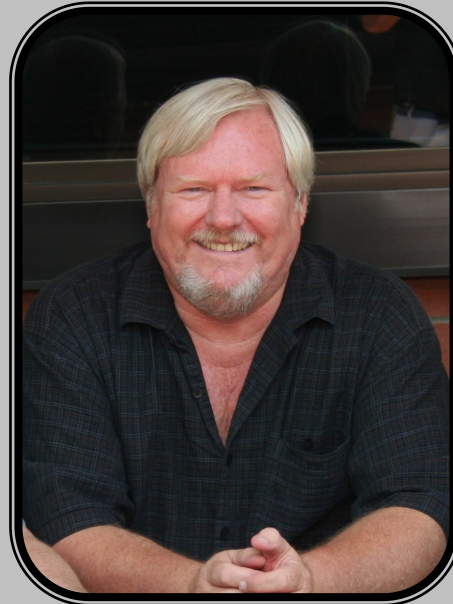
The Salina Chapter of the Kansas Society of Land Surveyors, Inc.

FEATURED SPEAKER

Dennis Mouland, PLS

Dennis is a registered professional surveyor in Arizona, New Mexico, and Colorado. He has a Bachelor of Arts degree in Organizational Management, and has been in the surveying profession since 1972. His experience is evenly split between the private sector, including his own surveying firm, and federal government employment.

Dennis has been an instructor and course manager for the BLM/Forest Service "Advanced Cadastral School" and most recently served as the National Cadastral Training Coordinator for BLM in Phoenix, AZ. In that position he developed the Certified Federal Surveyors Program for the Department of the Interior. In addition to having over 250



technical articles published in the U.S. and Canada, Dennis is a contributing author to the textbook "*The Surveying Handbook*", and authored "*Ethics for the Professional Surveyor*" in 1996, now in its third printing. He has conducted seminars for the surveying and real estate professions since 1984. To date, Dennis has instructed over 75,000 students on boundary survey subjects.

Dennis has taught boundary law subjects in higher education institutions since 1995, and is currently a Surveying Instructor at the University of Wyoming and Oklahoma State University. He lives near Prescott, Arizona, about 100 miles north of Phoenix.

Mr. Mouland will be Presenting:

Thinking Beyond Technology

Thursday: 1:00—5:00 p.m.

Thinking Beyond Technology looks at the negative impacts technology has had on society and on the survey profession in particular. It forces us to examine how we do things in the field and office versus how we should be doing things.

Controlling Intermediate Corners

Friday: 8:00 a.m.—12:00 p.m.

Controlling Intermediate Corners is a half day course on dealing with the many CIC's in the PLSS. Includes meander corners, both types of witness corners, line trees, witness points, closing corners, crossing closing corners, and previously set subdivisional corners.

Basic Logic for the Land Surveyor

Friday: 1:30—5:30 p.m.

Basic Logic starts with some generally illogical thinking by our society, and ends with discussions of real boundary survey issues that are often not treated very logically by our very own profession.

Photograph on Cover/Back: Deadwood Central R.R. Engineer Corps Outdoor Group [1888] Repository:
Library of Congress Prints and photographs Division Washington, D.C. 20540 #
<http://blogs.denverpost.com/captured/2011/02/23/from-the-archive-frontier-life-in-the-west/2713/>

Foxes, Ducks, Whales, and The Lawyer's Perspective on Property

Presented by: David Adams, LS

Saturday 8:00—10:00 a.m.

A two-hour seminar focusing on the concept of property as taught in law schools, highlighting the historical perspective of the American legal system and considering some of the possible differences between an attorney's idea of property and a land surveyor's idea of property.



David Adams, LS

David Adams, LS, is a graduate of the University of Missouri-Kansas City, and is a Juris Doctor Candidate at the University of Missouri-Kansas City School of Law. David has managed land survey work for Maas and Son Company in Leawood, Kansas, and also specialized in ALTA/ACSM land title surveys.

So you think you know the Kansas Public Land Survey System?

Presented by: Steven S. Brosemer, PS

Friday 1:30—5:30 p.m. and Saturday 8:00 a.m.—12:00 p.m.

Whether the participant is new to land surveying, preparing for the exam or has been licensed for years, there will be something for everyone. The class will explore the methods, madness, procedures and subtleties of the PLSS with an emphasis on modern retracements and the resulting section corner recovery and remonumentation.



Steve Brosemer, PS

Steven S. Brosemer, PS, was licensed by examination in 1980 and is a graduate of Wichita State University in History and Secondary Education. He is the son of his mentor, the late James H. Brosemer, RLS #82. In the last twenty-nine years, Steven has been an owner or partner in his current business and has provided land surveying services of every possible type to both the private and public sectors. Professionally, Steve served as President of Kansas Society of Land Surveyors in 1988 and 1989. Currently, he is a member of the KSLs Charitable Foundation Board and a Land Surveyor Member of the Kansas State Board of Technical Professions. Within his community, Steven is the Chair of the Emporia Area Chamber of Commerce and serves on the Board of Directors of the Lyon County Historical Society.

Legal Descriptions

Presented by: Ernest Cantu, LS

Friday 1:30—3:00 p.m. and repeating 3:30—5:30 p.m.

Whether you are a licensed surveyor, or are pursuing a license for surveying, or just perusing what's available in the realty market, knowing how to read and understand a legal description will put you ahead of the rest. From the point of beginning, this course will touch on various concepts about what to do and what NOT to do with the writing of legal descriptions. We'll examine some good legal descriptions and poke fun at other legal descriptions that are not quite up to par...and explain WHY. Be sure to print out the notes so that after the course, you may return thence to the point of beginning.



Ernest Cantu, LS

Ernest Cantu L.S. is a Survey Crew Chief for Professional Engineering Consultants. He is an active member of KSLs and has held various positions and titles within KSLs. Ernie served his home town of Belle Plaine as Chair of the Planning Commission, as Chair of the Belle Plaine Board of Zoning Appeals, as Chair of the Paradise Valley Pride civic organization, and as a promoter of the city's self-sustaining recycling program. Ernie has taught *Legal Descriptions* and *Boundary Control* courses at Butler Community College. One semester he even taught both classes at the same time, not just during the same semester but during the same glance at the clock. In his off-time, Ernie enjoys geocaching, an activity that uses GPS and takes you outdoors to amazing places that go unnoticed to most people. As a geocacher, he owns over a hundred published geocaches and has found several hundred other geocaches. Ernie can be reached by email at cantuland@gmail.com.

Title Insurance

Presented by: *David Coffelt*

Thursday 3:00—5:00 p.m. and Friday 8:00—10:00 a.m.

Ever wonder just what it is that title people do? This portion of the seminar will attempt to answer this profound question, and the many others that you may have about the title industry. Learn about the services available at your local title company that can actually make your work a little easier. Let's talk about ALTA surveys, and how to foster better communication between surveyors and title company personnel. This presentation promises to be enlightening and interesting, as well as offering you plenty of opportunity to discuss current issues in the industry as it relates to title.



David Coffelt

David Coffelt, is the owner of Coffelt Land Title, Inc., which has five offices, including one in Overland Park, KS. He has a degree from the University of Missouri in Agricultural Economics. Dave is a long-time member of the American Land Title Association, and has served the Missouri Land Title Association as its Past President, Past Board of Directors member, and chair of various committees. He was recognized in 1980 as Young Title Person of the Year — the first person to receive this honor from the association. Dave continues to serve each year as a Missouri Land Title Institute Instructor, and he tours the nation presenting title classes to attorneys, title association, real estate professionals, and now to land surveyors.

CPR

Presented by: *John Creager*

Saturday 8:00 a.m.—12:00 p.m.

Limit
15

ASHI **CPR and AED** is a combined CPR and AED program designed specifically for laypeople. The program is an excellent choice for both the community and workplace setting, and is based upon the *2010 International Consensus on Cardiopulmonary Resuscitation (CPR) and Emergency Cardiovascular Care (ECC) Science with Treatment Recommendations (CoSTR)* and other evidence-based treatment recommendations. Some of the topics covered will be: Respiratory and Circulatory Systems, including sudden cardiac arrest, early defibrillation, CPR and AED Provider Legal Considerations; recognizing an emergency, basic CPR, basic AED operation, choking, and emotional considerations. Participants will receive a certification card from the instructor.



John Creager

John Creager is the owner of Safety Training Solutions, LLC, which offers courses in CPR, Basic First Aid, Fire Safety, Extinguisher Training, Industrial Safety, and Bloodborne Pathogens Training. No matter where your job takes you, his classes will prepare you for emergencies. John has extensive personal experience in dealing with emergencies. He has been a Safety Courses instructor since 1995, a Certified Firefighter since 1997, an EMT since 1995, a Paramedic since 2000, and an Aircraft Rescue CFR Part 139 since 2006. In 2011, John helped craft legislation for the Missouri Dental Board as it pertains to CPR training requirements. He has also been a Mandt Instructor since 2004. John is married and has three children. His hobbies include cooking and traveling.



Join us at lunch on Friday for a series of drawings featuring gifts contributed by our Vendors.

Kansas Minimum Standards Review

Presented by: Kenneth P. Johnson, LS, and Jason P. Johnson, LS

Thursday 1:00—3:00 p.m. and Saturday 8:00—10:00 a.m.

This course will review the Kansas Minimum Standards for Boundary Surveys and Mortgagee Title Inspection Standards of Practice. The class will compare the changes made with Senate Bill 112 and how they correlate with the Minimum Standards. The class will be conducted as an “open forum” providing attendees with the opportunity to ask questions and discuss any of the standards and regulations. To comply with proposed 2014 KSBTP regulation changes for Kansas Minimum Standards education opportunities, a short quiz will be conducted and reviewed, and all attendees will be required to verify class attendance. **This course will provide two CEU's towards the education requirement of KSA 66-14-1.**



Kenneth P. Johnson, LS

Kenneth P. Johnson, L.S., Vice President of Campbell & Johnson, Engineers, PA, is a second-generation owner of a Surveying, Engineering and Architectural firm in north-central Kansas. Ken graduated from Ottawa University in 1977, joining the firm in 1978 as a human resource person and becoming a licensed Land Surveyor and co-owner of the firm in 1986. Ken has been a regular participant in the Salina Seminar Series since 1982 when the meetings were still held on the campus of Kansas Technical Institute. Ken is currently a member of the Salina (North Central) Chapter of KSLs, serving on the Salina Seminar Series committee. Ken is also the chairman of KSLs Historical Committee, the committee working on the Section Corner On Line Access and Retrieval project with the Kansas State Historical Society.



Jason P. Johnson, LS

Jason Johnson, LS, Campbell i& Johnson Engineers, P.A., graduated with a Associate's degree in Surveying Technology and a Bachelor's degree in Land Information Technologies from Kansas State University in December 2000. While at KSU, Jason served as President of the Student Chapter of KSLs. He is currently a member of the Salina Chapter of KSLs and NSPS. Jason has served on the Salina Seminar Series Committee. This is Jason's fourth year of team teaching the Minimum Standards Class.

RLS Prep

Presented by: Yolonda Lea Pears, LS

Thursday 1:00—5:00 p.m.

The first half of this session will cover the application procedure for the LS exam, good study habits, and some tips for taking the exam effectively. The second half will include information on the Kansas-Specific exam and where to find the information needed for that exam, as well as some tips for finding topics in the Kansas Statutes.



Yolonda Lea Pears, LS

Yolonda Lea Pears, LS, began her surveying career in 1992 as a survey drafter. She became licensed in 2000, and worked for Griffiths & Associates until Mr. Griffiths retired in 2007. She is currently employed at Savoy Company. Yolonda has been the editor of Section Lines, the KSLs quarterly news magazine, since 1995, and is currently the secretary/treasurer of KSLs.

CLASS DESCRIPTIONS

SALINA SEMINAR

Dig Safe

Presented by: Max Pendergrass

Saturday 10:00 a.m.—12:00 p.m.

This class will include underground safety videos, examples of excavation accidents and damages, information about Kansas One-Call, and the Kansas Underground Utility Damage Prevention Act, or KUUDPA. We will also discuss any issues or questions that participants have regarding the “call before you dig” process in Kansas.



Max Pendergrass

Max Pendergrass, is the Public Relations Coordinator for Kansas One-Call, a position he has held since 1999. As the PR Coordinator, Max is responsible for underground damage prevention education and training, covering all Kansas Counties from US Highway 81 West, as well as Butler and Cowley Counties. Max began his career in the USAF working on F-4D Phantom weapons control systems. Following his four year stint with the Air Force, Max went to work for AT&T as a technician on microwave radio and coax cable routes in Kansas, where he retired after 29 years and went to work for Kansas One-Call. He enjoys his work, his 5 grandchildren, and traveling with his wife of 49 years..



New Addition to the Seminar:

Join Us for Lunch on Thursday beginning at Noon.
Deli Sandwiches & Chips - \$5.00/person—RSVP when you register.



Robert Harvey's "Instructions to County Surveyors" - 100 years later

Presented by: Jerry Penry, LS

Saturday 8:00 —10:00 a.m.

As the original General Land Office surveys were completed, widespread settlement reached the plains. Landowners were frequently confused about correctly defining their property because of the absence of section corners. In 1902, due to the prevalence of land disputes and litigation, the State of Nebraska appointed the state surveyor, Robert Harvey, to oversee and settle these cases. The absence of monumentation, or overall shoddy work, was often attributed to drunkenness of the surveying crews. Harvey, however, uncovered a systematic method used in many cases by fraudulent deputy surveyors, in which monuments were established, but in locations where most retracing surveyors would not find them. Harvey subsequently published a circular of instructions detailing how to find the original pits and mound monuments and how to correctly retrace the GLO surveyor's work which he defined, the "Short-Cut Method". This book, or circular, was originally intended for the county surveyors in Nebraska, but quickly gained national attention. It was sought by surveyors and engineers, lawyers and judges, land owners and universities, and by the General Land Office in Washington, D.C. One hundred years have passed since Harvey published his revised and expanded edition of his circular of instructions in 1914. Robert Harvey's method of researching and finding lost section corners as described in his publication remains the same today despite a century of advances in technology. *Note: Those who register for, and attend the class will receive a free copy of Harvey's book.*



Jerry Penry, LS

Jerry Penry, LS, is a licensed land surveyor in Nebraska and South Dakota with 28 years of surveying experience. Raised in northern Nebraska near the Sandhills region, he received his land surveying degree from Southeast Community College in Milford, Nebraska. Jerry's keen interest in history and research led to him writing several books on the topics of land surveying, World War II, and railroads. Over the past ten years, he has been a featured speaker for conferences, historical societies, and commemorative historical events. National surveying magazines have published over thirty articles written by Jerry. He is the current editor of the *Nebraska Surveyor* newsletter and is employed at Lancaster County Engineering in Lincoln, Nebraska, where he manages the surveying department. He and his wife, Jenny, live in Milford, Nebraska.



Special Event

Friday, January 10th

5:45 - 7:00 p.m.

UAS—Unmanned Aerial Systems

Join us for dinner and a presentation by

Fred Bulger, PE,

Support Representative for



This session will cover the Unmanned Aerial Systems that are impacting the market. Fred will provide a history of drones and discuss FAA regulations, manufacturers, flight plans, logistics, observed data, and accuracies. The Trimble UAS will be presented and an actual flight will be shown using a simulator.

At: Webster Conference Center

Cost per person: \$12

Registration Required by 12/21/13

Earn 1 PDH

NGS Tool Kit

Presented by: James Richardson

Friday 3:30—5:30 p.m. and Saturday 10:00 a.m.—12:00 p.m.

The National Geodetic Survey's mission is to maintain the National Spatial Reference System (NSRS) which generally includes the national horizontal, vertical and gravity networks. The horizontal network is divided into two networks characterized as "passive" and "active", or marks in the ground and Continuously Operating Reference Stations (CORS). Generally, the vertical network consists of monumented, terrestrial bench marks along highways and railway lines as well as tide gauges in coastal areas. Markers for the national gravity network, of limited use for ordinary work, are located on or in highly stable buildings. The marks have a hierarchy of accuracy and information about them is publicly accessible by means of the internet.

In order to use National Geodetic Survey (NGS) control information, the agency has developed many computer programs for a variety of devices over the years to help surveyors, mappers, navigators and engineers use this control. Some of these programs, including FORTRAN code for program developers, reside in a place at the NGS website called the NGS Geodetic Tool Kit. This presentation will focus on the tool kit, accessing the programs which appear in it. It will also provide information about programs of possible interest located in other parts of the website and programs which incorporate Geodetic Tool Kit programs which logically work together. Due to time constraints, actual program demonstrations may be limited. **Attendees are encouraged to bring their laptops to try some of the programs, especially since some are interactive as well as downloadable.**



James Richardson

James Richardson is an NGS Geodetic Advisor. He has been an advisor in Nebraska and Vermont, starting with NGS in the advisor program in 1999. Mr. Richardson has worked in surveying since 1976, for private companies, but mostly the federal government, including the Defense Mapping Agency, Interamerican Geodetic Survey, NASA's Jet Propulsion Laboratory and Goddard Space Flight Center and NGS. He has been involved in various capacities with conventional geodetic surveys, gravity surveys, satellite surveying and astro-positioning in the USA as well as Central and South America. He has a liberal arts degree from Penn State and a degree in surveying. He lives in the Lincoln, Nebraska, area with his two children. Currently he's assigned to work on the Geoid Slope Validation Survey of 2014 in Iowa which is part of the NGS program to improve the accuracy of elevations determined with GPS and eventually other navigational satellite systems.

Tree Identification

Presented by: John Riggs

Friday 10:00 a.m.—12:00 p.m. and Saturday 10:00 a.m.—12:00 p.m.

This class will study the importance of accurate tree identification information as an element of property base mapping. Requirements for compliance with state laws and local ordinances concerning tree protection will be noted. Commonly encountered Kansas trees will be reviewed and methods of identification will be studied. Participants will have the opportunity to view a photographic presentation of tree species. The course is designed to provide participants with basic working knowledge for field application.



John Riggs, RLA, PIC

John Riggs, RLA, PIC, Riggs Associates, Planners, Land Planners, Landscape Architects, is a graduate of KSU-Manhattan. John holds licenses and certifications for the practice of Landscape Architecture and City Planning in Kansas and surrounding states. John worked for the Menninger Foundation and Wilson & Company before opening his own consulting practice in 1991. John is the owner and developer of the Riggs Arboretum at Waterloo, Kansas, a century-old, historic federal experiment station containing nearly 200 varieties of trees and plants.

Handouts for all the classes offered in the 2014 Seminar

may be accessed through this QR Code, or by going to our website at

<http://www.salinaseminarseries.com/2014-handouts.html>



CLASS DESCRIPTIONS

SALINA SEMINAR

The National Flood Insurance Program (NFIP) - Elevation Certificate Workshop

Presented by: *Steve Samuelson*

Thursday 1:00—5:00 p.m. and Friday 8:00 a.m.—12:00 p.m.



The elevation certificate class will have a short discussion about the National Flood Insurance Program at the beginning before diving into the forms. This is to lay the background information about why certain things are required on the elevation certificate form and even the need for the form itself. During the class we will go through the form, line by line, discussing how to fill out each section. In order to most accurately complete the form, we will discuss the use of flood maps and the flood insurance study, sources of base flood elevation data, and look at photos of buildings from Kansas. The elevation certificate can be used as a supporting document for a Letter of Map Amendment. There will also be information about submitting the Letter of Map Amendment at the end of the class.



Steve Samuelson, CFM

Steve Samuelson, CFM, Steve Samuelson has been the National Flood Insurance Program Specialist at Kansas Department of Agriculture/Division of Water Resources since 2007. From 2005 to 2007 Steve worked for Lyon County as the Zoning Administrator and Floodplain Manager. Steve graduated from Emporia State University in 1982, and is a Certified Floodplain Manager.

GPS—Planning, Updates & Resources

Presented by: *Steve Thompson, PE, and Kenneth P. Johnson, LS*

Friday 8:00 a.m.—12:00 p.m.

Ken and Steve will discuss an actual GPS project from beginning to end including: planning, data collection, analysis (combining static GPS, OPUS, & RTK), checking results, and mapping (including coordinate systems, Geoid models, and datums). OPUS results are now in IGS08/NAD83(2011) coordinates only and as always correct antenna heights are imperative. Ken and Steve will share information about additional GPS resources that are available at little or no cost to the surveyor for use in GPS pre-planning, field preparation, and project implementation. Steve will also give a brief update on the status of the national GRAV-D program, CORS network, NSRS, and statewide LIDAR project. **See Kenneth Johnson's bio under Minimum Standards.*



Steve Thompson, P.E.

Steve Thompson, PE, is a GIS/GPS consultant working with local, state and federal governments and the private sector in Kansas regarding parcel and centerline mapping, utility mapping, GIS/GPS training for first responders, E-911, and Homeland Security. Steve is also an adjunct professor at both Butler Community College's Andover Campus, and Cloud County Community College's Concordia Campus, teaching GIS/GPS. Steve graduated in 1972 with a BS in Civil Engineering from Kansas State University and has been a licensed professional engineer in Kansas since 1976. Steve was a professor at KSU for 22 years, teaching Computer Science, Civil Engineering Technologies, and GIS/GPS Technologies, establishing the first GIS/GPS Associate Degree option in the nation at KSU-Salina., and heading the Civil Engineering Department for 3 years. During his tenure at KSU, Steve established the first GPS Base Station for the State of Kansas and worked closely with the National Geodetic Survey and the National Science Foundation. Steve has served as a member of the GIS Technical Advisory Committee for the State of Kansas since 1988 and is a member of the NGS Height Modernization Subcommittee for the State of Kansas, the Kansas Society of Land Surveyors, and the Kansas Association of Mappers.

Survey Administration

Presented by: Rod Zinn, LS

Thursday 1:00—5:00 p.m.

Today's tough economic conundrum makes it more difficult than ever to be successful as a Survey Coordinator or a Survey Crew member. Mr. Zinn has been associated with Land Surveying for 28 years and during that time has put a lot of thought into how to be more effective on both the management and field sides of surveying. Although the day-to-day challenges still occur and do not always go as planned, you can put into effect a method and demeanor that will help the department function more efficiently and produce an improved atmosphere for the client, employer, and employees. This class will cover management and survey crew tasks which will help both entities become more productive in the office, as well as in the field. Most employees want to set themselves apart from others in the firm—or field of surveying—by excelling in the challenges they encounter on the job. This program will help line out to both the Survey Coordinators and the surveyors in the field the do's and don'ts of their positions. Many factors go into being a successful employee—this short program will bring to light what is necessary to be successful in your position. Topics of interest that will be covered include: management, technology, equipment, time keeping, profitability, communication with clients and with peers, understanding the needed accuracy of the survey (boundary, topo, construction, etc.), advancement, and education.

Survey Math (Part I) - Updating Skills and Survey Math (Part II) - LS Exam

Presented by: Rod Zinn, LS

Friday: Part I: 8:00 a.m.—12:00 p.m., and Part II: 1:30—5:30 p.m.

This year's "Survey Math" course will be divided into two separate programs. Both will be very essential to those members who wish to update their math skills (Friday morning session) and those who wish to sit for the Land Survey Exam (Friday afternoon session). With modern technology, many surveyors have become rusty in their computations, due to the fact that the software in their data collectors can perform the needed calculations. The focus of the classes this year will begin with introductory mathematics moving quickly into some minor Algebra, Geometry and both Right Angle and Oblique Trigonometry. All mathematics will be directly "Land Survey" related and will include "Tech Tips" and problem solving strategies towards taking the FLS/PLS exams and checking daily surveying calculations.



Rod Zinn, LS

Rod Zinn, LS, has been affiliated with land surveying since 1986, including ten years of surveying in the Kansas City Metro area. He has approximately 28 years of land surveying experience in the field, education and office management. He graduated from Pittsburg State University with a Bachelor of Science degree in Vocational Technical Education and has attended the University of Kansas, Johnson County Community College and Washburn University for continuing education credits. He previously served as a full time instructor for more than ten years in the Civil Engineering Technology program at Washburn Tech, formerly known as Kaw Area Technical School, where he developed an in-depth curriculum for land surveying, mathematics, computer literacy and AutoCAD programs. Rod, while serving as an instructor, also served as a lead advisor in SkillsUSA where he mentored and took his students to national competitions in multiple years in related skills and achieved multiple national and number one rankings. During his tenure as an instructor, he served as the Kansas Industrial Education Association Board President and Kansas SkillsUSA Advisors Board President. In 2005 Mr. Zinn entered the private sector as a full time land surveyor and land survey department manager. Currently Rod is a managing member and partner with Cornerstone Regional Surveying in Independence, Kansas where his firm covers all aspects of surveying throughout Kansas, Missouri and Oklahoma.

Roundtable on GPS

Moderated by Jason Johnson, LS, and Presented by Representatives of the GPS Community

Friday 1:30—3:30 p.m.



This Roundtable discussion gives you the chance to sit down, in a small group setting, with professionals in the field of GPS equipment. Bring with you your thoughts on dilemmas with equipment, questions about GPS radios and the new frequency laws, or simply your insight into how you make your equipment work best for you. Even though these roundtable discussions will be led by the equipment vendors, your insight and knowledge is welcome. If you are experiencing one of the above issues, or if you have a completely different one, bring that to the Roundtable for discussion; and hopefully with the insight of the vendors, and the advice of your peers, you can come to a resolution. This class is designed for all levels of experience—from the field tech using the equipment every day, to the office tech who deals with the data, to the Survey Department head who manages it all, to the business owner who has the responsibility of maintaining and purchasing new equipment—each can provide a different perspective into the world of GPS.

ANNOUNCEMENTS

SALINA SEMINAR

KSLS Board Meeting & Dinner

The Salina Chapter will host a meeting of the KSLS Board of Directors, Thursday, January 9, at 7:00 p.m., at Webster Conference Center. All KSLS Members are invited to attend the meeting. The dinner, which begins at 6:15 p.m., will be open to all Seminar participants. Dinner is by reservation only (reserve when you complete your registration form). Cost is \$12.00 per person. Current Board Members and Committee Chairs are free. RSVP must be received by 12/21/13.

Fine Print

CANCELLATION POLICY: If you cancel on or before December 27, 2013, you will receive a full refund less a \$25 service charge, or you may designate someone to take your place for a \$25 fee.

No refunds after 12/27/13

If you need to cancel after December 27, 2013, you may designate someone to come in your place, however a \$50 handling fee will apply.

PDH CERTIFICATES: Certificates must be picked up in person at the Seminar at the end of your last scheduled session. ***PDH Certificates will not be mailed. Since PDH Certificates are printed in advance, there is a \$10 charge for any changes to the PDH Certificate requested after January 8, 2014, including changing the number of hours you will be attending, and adding or deleting the Minimum Standards class.***

WALK-IN REGISTRATIONS at the Seminar will be charged the \$50 late fee and a \$25 special handling fee.

Handouts

Handouts will be posted on the Seminar website prior to the Seminar and are **FREE** for downloading. Registrants are responsible for downloading and/or printing handouts for their classes.

<http://www.salinaseminarseries.com/2014-handouts.html>

IF YOU DO NOT HAVE INTERNET ACCESS, contact the Conference Manager prior to December 21 to make arrangements to have hand-outs printed. A fee of \$5 per class will be charged.

Prize Give-Away

In lieu of cash drawings, the first 350 people to register will receive a free gift. Prizes donated by our vendors will be given away in a drawing during lunch on Friday.

KSBTP Auditing Procedures

KSBTP has established guidelines for what constitutes proof of attendance for audits of professional development hours. That proof includes your PDH Certificate. Please keep a copy of your registration confirmation, the Seminar Brochure, and your PDH Certificate with your log. Records must be retained for four years. **We are not responsible for maintaining records of your attendance and will not keep copies of PDH certificates.**

Hotel Accommodations

A block of rooms has been set aside at the LaQuinta Inn, 201 E. Diamond Drive, Salina, KS, for \$66+tax/night king or double. The LaQuinta is located one-mile west of Webster Conference Center on I-70 exit 252. Please mention the Salina Seminar Series when making your reservations. Reservations must be made before 12/31/2013, to receive this rate. Call LaQuinta directly at 785-827-9000.

Webster Conference Center has motel rooms with queen beds available for \$50/night/room. See Seminar website for more detail. Reservations are required. Call Webster at 785-827-6565 or 877-WCC-RESV.

The Ramada Inn has set aside a block of rooms for \$49+tax/night. See the seminar website for more detail or call the hotel at 785-823-1739.

*****NOTE*** Full-time Science, Engineering and Survey Technology students will receive free lodging at Webster Conference Center. Contact the Conference Manager (not Webster) for information.**

Additional information on hotels in the area is available at www.salinaseminarseries.com or by clicking on the QR Code.



The Association of State Floodplain Managers has authorized us to give Continuing Education Credits for this Seminar. The NFIP Elevation Certificates Workshop will earn 4 CECS.

SCHEDULE

SALINA SEMINAR

Thursday, January 9

12:00 pm - 1:00 pm	★ NEW Registration and Lunch (\$5.00 RSVP Required)				
1:00 pm - 2:50 pm	Technology Mouland	Survey Admin Zinn	RLS Prep Pears	Elevation Cert Samuelson	Minimum Standards Johnson & Johnson
2:50 pm - 3:10 pm	Afternoon Break				
3:10 pm - 5:00 pm	Technology Cont'd	Survey Admin Cont'd	RLS Prep Cont'd	Elevation Cert Cont'd	Title Insurance Coffelt
6:30 pm - 10:00 pm	KSLs Board Dinner & Meeting				

Friday, January 10

7:30 am - 8:00 am	Exhibits Open	★ NEW Registration and Full Hot Breakfast (included)				
8:00 am - 9:50 am		Control Int Corners Mouland	Math I Zinn	Elevation Cert Samuelson	GPS Thompson/Johnson	Title Insurance Coffelt
9:50 am - 10:10 am		Morning Break				
10:10 am - 12:00 pm		Control Int Corners Cont'd	Math I Cont'd	Elevation Cert Cont'd	GPS Cont'd	Tree ID Riggs
12:00 pm - 1:30 pm		Lunch				
1:30 pm - 3:20 pm		Basic Logic Mouland	Math II Zinn	Legal Descriptions Cantu	PLSS Brosemer	Roundtable on GPS
3:20 pm - 3:40 pm		Afternoon Break				
3:40 pm - 5:30 pm		Basic Logic Cont'd	Math II Cont'd	NGS Toolkit Richardson	PLSS Cont'd	Legal Descriptions Cantu
5:45 - 7:00 pm		★ NEW Dinner Program (\$12.00): Unmanned Aerial Systems by Fred Bulger, PE, Trimble				

Saturday, January 11

7:30 am - 8:00 am	Continental Breakfast				
8:00 am - 9:50 am	CPR Creager	Property Adams	Minimum Standards Johnson & Johnson	PLSS Brosemer	R. Harvey's Instructions Penry
9:50 am - 10:10 am	Morning Break				
10:10 am - 12:00 pm	CPR Cont'd	Tree ID Riggs	Dig Safe Pendergrass	PLSS Cont'd	NGS Tool Kit Richardson

Save \$5

Save the \$5.00 Manual Registration Fee by registering online at www.salinaseminarseries.com or scan the QR Code.



Name _____

Preferred Contact Phone No. _____ License No. _____ KSLs Member: Yes _____ No _____

Company Name (if applicable) and Address _____

Email Address _____

Sessions: (Please mark the circle for the session you plan to attend in each time slot) (# shown is hours: PDH /CEC)

January 9th Thursday Afternoon

- 1:00 - 5:00 Technology/Mouland (4)
- 1:00 - 5:00 Elevation Certificates/Samuelson (4/4)
- 1:00 - 5:00 RLS Prep/Pears (4)
- 1:00 - 5:00 Survey Administration/Zinn (4)
- 1:00 - 3:00 Minimum Standards/Johnsons (2)
- 3:00 - 5:00 Title Insurance/Coffelt (2)

January 10th Friday Morning

- 8:00 - 12:00 Control Int Corners/Mouland (4)
- 8:00 - 12:00 GPS/Johnson&Thompson (4)
- 8:00 - 12:00 Elevation Certificates/Samuelson (4/4)
- 8:00 - 12:00 Math I/Zinn (4)
- 8:00 - 10:00 Title Insurance/Coffelt (2)
- 10:00 - 12:00 Tree ID/Riggs (2)

January 10th Friday Afternoon

- 1:30 - 5:30 Basic Logic/Mouland (4)
- 1:30 - 5:30 Math II/Zinn (4)
- 1:30 - 5:30 PLSS/Brosemer (4)
- 1:30 - 3:30 Legal Descriptions/Cantu (2)
- 1:30 - 3:30 Roundtable on GPS (2)
- 3:30 - 5:30 NGS Toolkit/Richardson (2)
- 3:30 - 5:30 Legal Descriptions/Cantu repeat (2)
- 5:45 - 7:00 UAS & Dinner (1) \$12 Fee & RSVP by 12/21

January 11th Saturday Morning

- 8:00 - 12:00 CPR/Creager Limit 15 (4)
- 8:00 - 12:00 PLSS/Brosemer (4)
- 8:00 - 10:00 Property/Adams (2)
- 8:00 - 10:00 R. Harvey's Inst./Penry (2)
- 8:00 - 10:00 Minimum Standards/Johnsons (2)
- 10:00 - 12:00 Dig Safe/Pendergrass (2)
- 10:00 - 12:00 Tree ID/Riggs (2)
- 10:00 - 12:00 NGS Toolkit/Richardson (2)

Payment Methods:

Credit Card:

MC/VISA/DISC (Circle One) Card No. _____

Name _____ Exp. _____ CSC# (on back) _____

Check: Make checks payable to: **Salina Chapter of KSLs**

Conference Fees:

Credit Hours	Member	Retired/ Associates	Non-Members
4	\$165	\$110	\$220
8	\$195	\$130	\$260
12	\$225	\$150	\$300
16	\$240	\$160	\$320

Fees from above:	\$
\$5.00 Manual Registration Fee	\$ 5.00
Late Fee—Add \$50 after 12/7/13	\$
NEW! Thursday Lunch—\$5.00 each **	\$
Board Dinner (\$12) **	\$
NEW! Friday Night Dinner & UAS—\$12 each **	\$
Handout Fees (\$5 per class) Deadline to order is 12/21/13.	\$
Total Due	\$

** You must RSVP for all meals - except Friday Lunch - by 12/21/2013. Your meal tickets will be in your bag when you check in.

Show Floodplain CECs on my certificate (circle) Yes No
Specify special dietary needs: _____

See the Brochure for our Cancellation Policy

Questions?

Call: 785-826-8958

Or email: salinaseminarseries@yahoo.com

Mail completed form and payment to:

Salina Seminar Series c/o Evelyn Cable
1232 W. Highway K143, Salina, KS 67401

SALINA SEMINAR SERIES

January 9-11, 2014



**Webster Conference Center
2601 North Ohio
Salina, KS 67401**

**Land Surveyors: Earn up to 17 PDHs
Certified Floodplain Managers: Earn up to 4 CECs
We are Pre-Approved for Missouri PDU
Full and Part-time Surveying Students Attend FREE**



Like Us



@SalinaSeminar

Visit our website:

